

April 7, 2016 Board Meeting Presentation 2016 Water Supply Outlook



5.3 2016 Water Supply Outlook

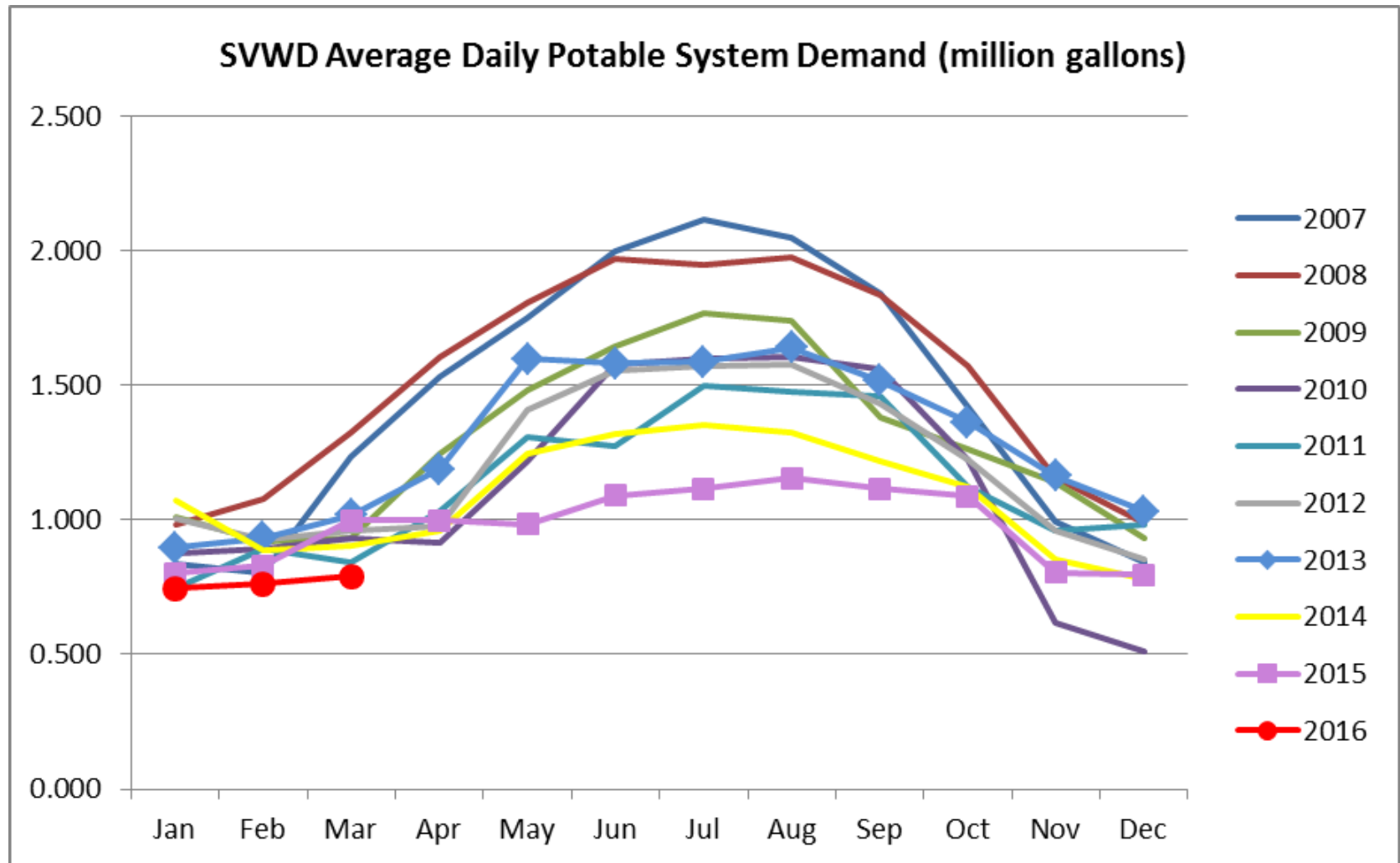
Page 5.3 - 1

- 14.24 inches of rain in March
- Water year total rainfall 40.88 inches

WATER SUPPLY CONDITION - AS OF MARCH 31, 2016															
		Average Rainfall	Rainfall (inches)				Rainfall (percent of average)				Cumulative			Single Year	
			2013	2014	2015	2016	2013	2014	2015	2016	4-year	3-year	2-year		
Stage 1	Cumulative rainfall over 2 years < 60% of average and/or Single year rainfall < 50% of average	41.53	31.87	20.32	28.89	40.88	77%	49%	70%	98%				84%	98%
Stage 2	Cumulative rainfall over 3 years < 60% of average and/or Cumulative rainfall over 2 years < 50% of average and/or Catastrophic loss of > 35% of well capacity	41.53	31.87	20.32	28.89	40.88	77%	49%	70%	98%		72%	84%		
Stage 3	Cumulative rainfall over 4 years < 60% of average and/or Cumulative rainfall over 3 years < 50% of average and/or Catastrophic loss of > 50% of well capacity	41.53	31.87	20.32	28.89	40.88	77%	49%	70%	98%	73%	72%			

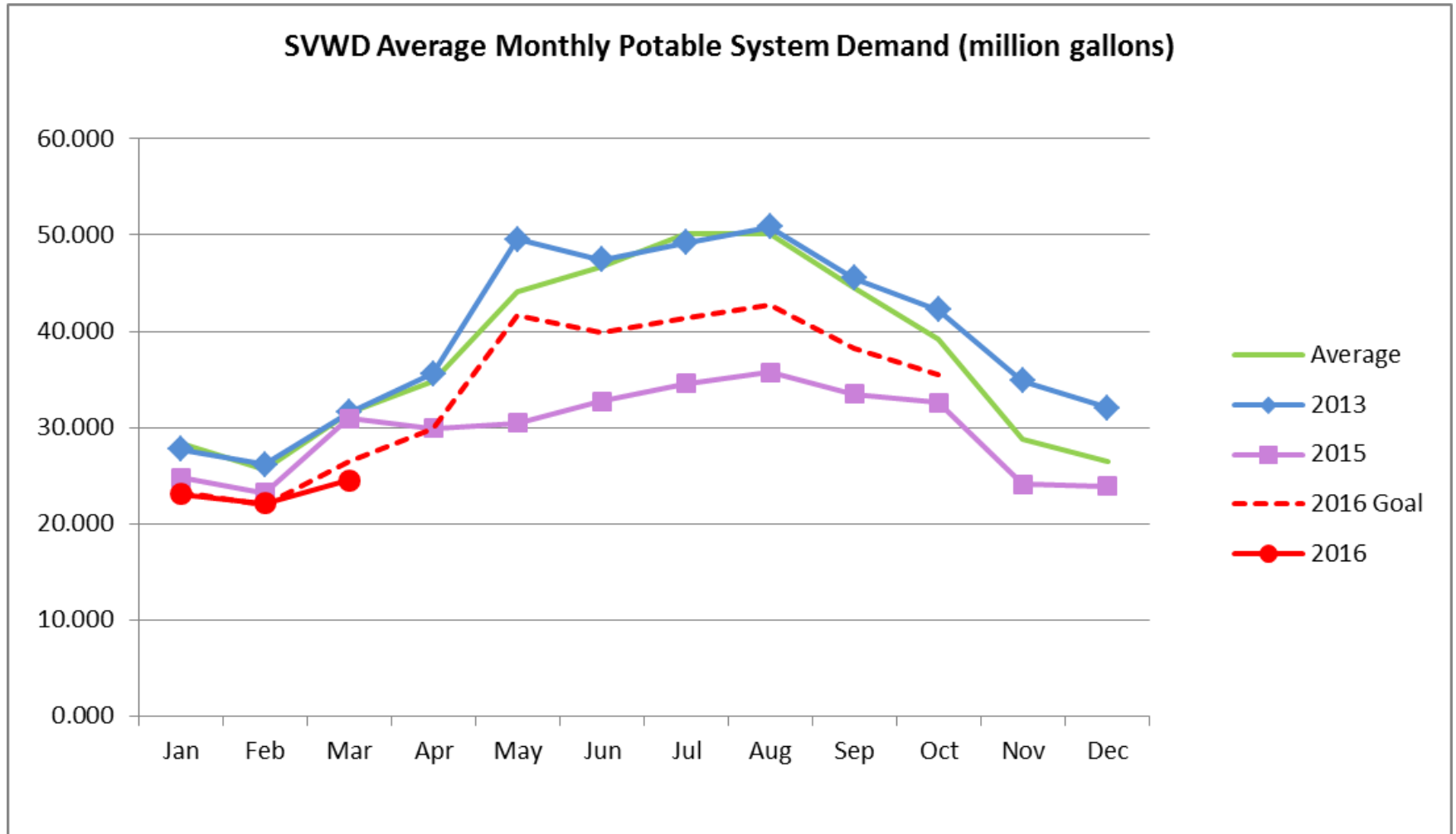
5.3 2016 Water Supply Outlook

Potable System Demand Page 5.3 - 3



5.3 2016 Water Supply Outlook

Potable System Demand Page 5.3 - 3



5.4 Amendment to RWA with City

Page 5.4 - 1

- Tertiary Treatment Plant average supply capacity is 750,000 gallons per day (GPD)
- Average recycled system demand
 - 275,000 GPD in summer season
 - 75,000 GPD in winter season
- Proposal to relinquish 9.59% of the District entitlement
- Also amend RWA for use outside City limits