

WATER-WISE GARDEN PLAN FOR COASTAL TERRACES, GRASSLAND AND CHAPARRAL

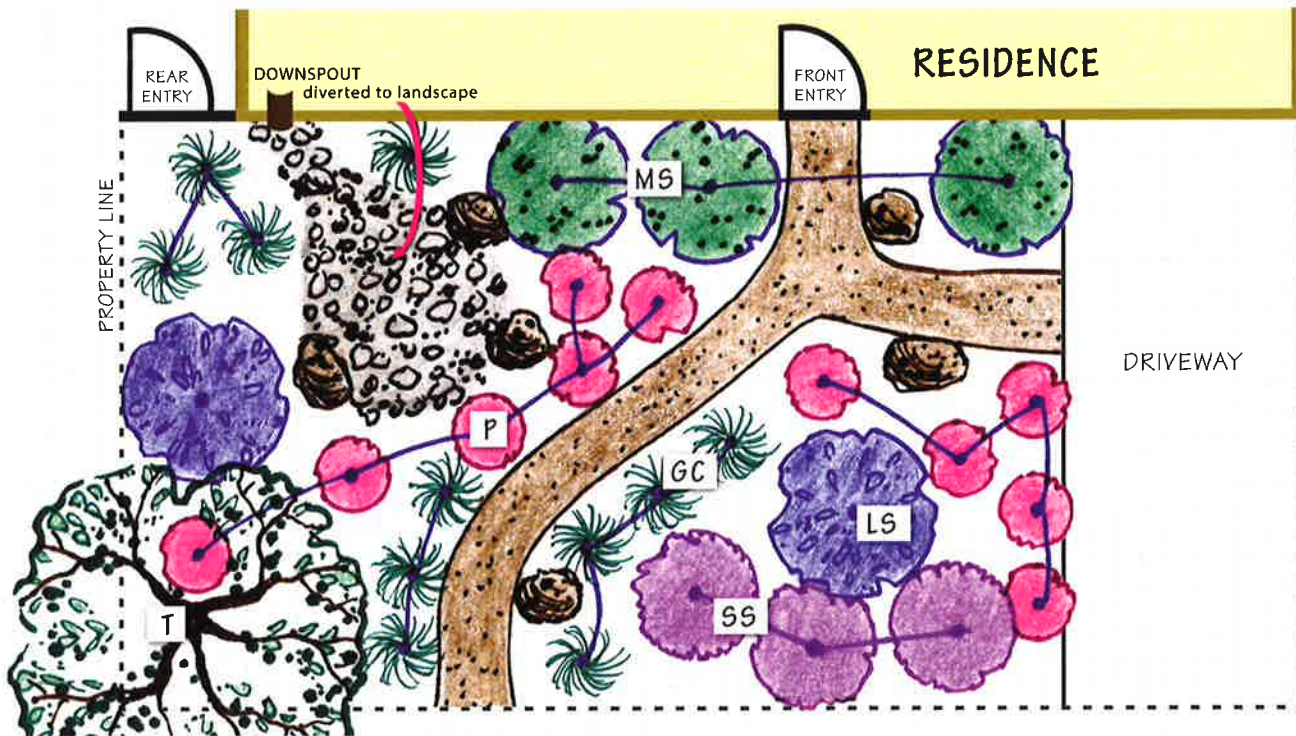


Before your home or neighborhood was built a native plant community existed there. Gardens that incorporate these native plants thrive without fertilizer, pesticides and little to no water because they are naturally adapted to the area and our summer-dry climate. These diverse and beautiful plants also attract and benefit native birds, butterflies and other wildlife.

Is Your Property in a Coastal Terrace Plant Community?






If your garden is flat, sunny, and has deep soils, choose deep-rooted meadow grasses and incorporate other shrubs, perennials and wildflowers for spring and summer color.

Sample Landscape Plan SCALE: 1 square = 1 foot



Drawing created by Nicole Douglas, Douglas Landscape Design

Coastal Terraces, Grassland & Chaparral Plant Options - Choose from:

- | | |
|---|---|
| <p> TREES OR LARGE SHRUBS (T or LS on plan) more than 10' tall:</p> <ul style="list-style-type: none"> <input type="checkbox"/> <i>Ceanothus spp.</i> – California lilac <input type="checkbox"/> <i>Arctostaphylos spp.</i> - manzanita <input type="checkbox"/> <i>Fremontodendron spp.</i> - flannelbush <p> MEDIUM SHRUBS (MS on plan) 4-8' tall:</p> <ul style="list-style-type: none"> <input type="checkbox"/> <i>Erigonum giganteum</i> – St Catherine's lace, 4-6' (h) x 4-8' (w) <input type="checkbox"/> <i>Salvia clevelandii</i> – Cleveland sage, 3-5' (h) x 3-5' (w) <input type="checkbox"/> <i>Grevillea lanigera</i> - wooly grevillea, 3-6' (h) x 6-10' (w) (NON NATIVE) <p> SMALL SHRUBS (SS on plan) 2-4' tall:</p> <ul style="list-style-type: none"> <input type="checkbox"/> <i>Artemisia pycnocephala</i> – sandhill sage, 2' x 3' <input type="checkbox"/> <i>Mimulus aurantiacus</i> – sticky monkeyflower, 3-4' x 3-4' <input type="checkbox"/> <i>Rosmarinus officinalis</i>, – 'Prostratus' (NOT NATIVE), 2' x 4-8' | <p> PERENNIALS (P on plan):</p> <ul style="list-style-type: none"> <input type="checkbox"/> <i>Penstemon heterophyllus</i> - blue foothill penstemon, 1-2' x 2-3' <input type="checkbox"/> <i>Erigonum grande var. rubescens</i> – rosy buckwheat, 1-2' x 2-3' <input type="checkbox"/> <i>Epilobium californica</i> - California fuchsia, 1-2' x 4' <p> GRASSES AND GROUNDCOVER (GC on plan) less than 1-2' and spreading 2-4':</p> <ul style="list-style-type: none"> <input type="checkbox"/> <i>Festuca idahoensis or rubra</i> – fescue <input type="checkbox"/> <i>Salvia sonomensis</i> - Sonoma sage <input type="checkbox"/> <i>Achillea millefolium</i> – common-yarrow |
|---|---|

See more plant options at www.green-gardener.org

WATER-WISE GARDEN PLAN FOR A MIXED EVERGREEN FOREST

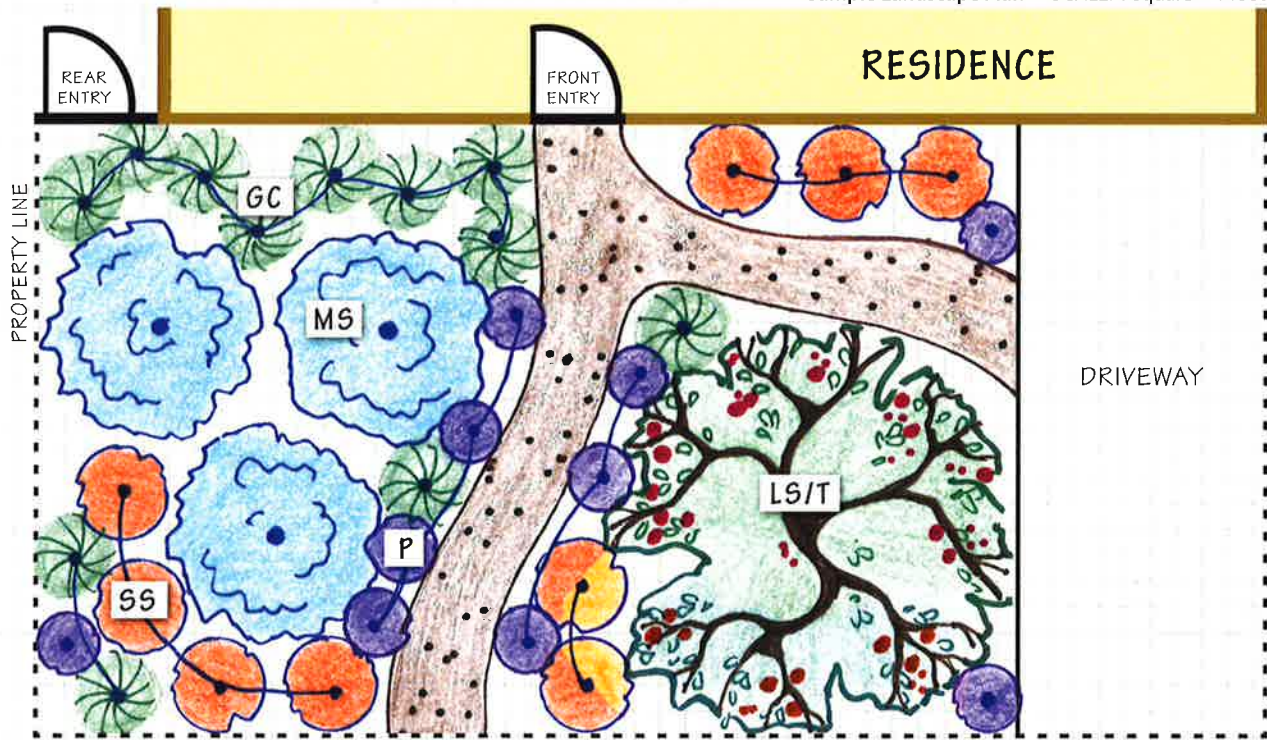


Before your home or neighborhood was built a native plant community existed there. Gardens that incorporate these native plants thrive without fertilizer, pesticides and little to no water because they are naturally adapted to the area and our summer-dry climate. These diverse and beautiful plants also attract and benefit native birds, butterflies and other wildlife.

Is Your Property in a Mixed Evergreen Forest Plant Community?


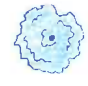



If your garden contains both evergreen trees such as pines, madrone, and California bay along with deciduous trees such as maple and oak, choose plants from the mixed evergreen plant community.

Sample Landscape Plan SCALE: 1 square = 1 foot



Drawing created by Nicole Douglas, Douglas Landscape Design

Mixed Evergreen Plant Options - Choose from:

- 
TREES OR LARGE SHRUBS (LS/T on plan) more than 10' tall and wide:
 - Cercis occidentalis* - western redbud
 - Arbutus "Marina"* - Marina madrone
 - Garrya elliptica* - silk tassel
- 
MEDIUM SHRUBS (MS on plan) 4-8' tall:
 - Ribes sanguineum* - pink flowering current, 5-12' x 5-12'
 - Ribes viburnifolium* - evergreen currant, 3-6' x 4-12'
 - Ceanothus spp.* - Several varieties, including Big Sur, Carmel mountain, and California mountain lilac
- 
SMALL SHRUBS (SS on plan) 2-4' tall:
 - Mimulus aurantiacus spp.* - sticky monkeyflower, 3-4' x 3-4'
 - Correa pulchella spp.* - Australian fuschia (NON NATIVE), 2-3' x 4-5'
 - Arctostaphylos hookeri*, - Monterey manzanita, 2-4' x 4'
- 
PERENNIALS (P on plan):
 - Monardella villosa* - coyote mint, 1-2' x 12-18"
 - Polystichum munitum* - western sword fern, 3-5' x 3-4'
 - Iris douglasiana* and hybrids- douglas iris, 1-2' x 2-4'
- 
GRASSES AND GROUNDCOVER (GC on plan) less than 1-2' and spreading:
 - Festuca californica*, California fescue
 - Arctostaphylos uva-ursi* or *edmundsii* - manzanita
 - Fragaria californica* - woodland strawberry

See more plant options at www.green-gardener.org

WATER-WISE GARDEN PLAN FOR A REDWOOD FOREST

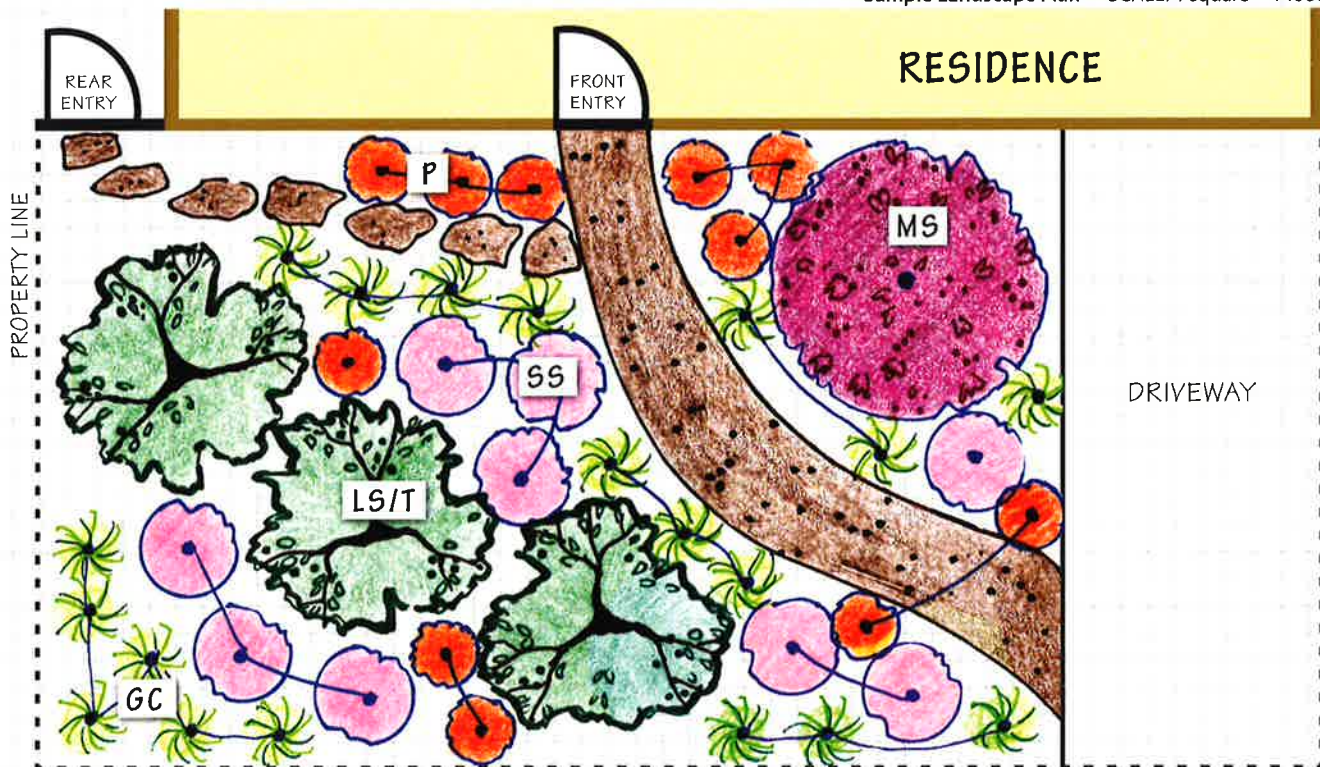


Before your home or neighborhood was built a native plant community existed there. Gardens that incorporate these native plants thrive without fertilizer, pesticides and little to no water because they are naturally adapted to the area and our summer-dry climate. These diverse and beautiful plants also attract and benefit native birds, butterflies and other wildlife.

Is Your Property in a Redwood Forest Plant Community?

If your garden is dominated by coast redwoods, pines, and cedar trees that provide continuous deep shade, choose groundcovers, perennials and ferns from the redwood forest community.

Sample Landscape Plan SCALE: 1 square = 1 foot



Drawing created by Nicole Douglas, Douglas Landscape Design

Redwood Forest Plant Options - Choose from:



TREES OR LARGE SHRUBS (LS/T on plan) more than 10' tall and wide:

- Acer circinatum* - vine maple
- Myrica californica* - Pacific wax myrtle
- Rhododendron occidentale* - western azalea



MEDIUM SHRUB (MS on plan) 4-8' tall:

- Woodwardia fimbriata* - giant chain fern, 4-6' x 4'
- Ribes viburnifolium* evergreen currant, 3-6' x 4-12'
- Ribes sanguineum* - pink flowering current, 5-12' x 5-12'



SMALL SHRUB (SS on plan) 2-4' tall:

- Mahonia repens*, or *Berberis aquifolium* 'Compacta' - barberry, compact Oregon grape, 2' x 3-5'
- Correa pulchella* spp. - Australian fuschia (NOT NATIVE), 2-3' x 4-5'



PERENNIAL (P on plan):

- Polystichum munitum* - western sword fern, 3-5' x 3-4'
- Aquilegia formosa* - western columbine, 1-2' x 1'
- Dicentra formosa* - western bleeding heart, 1-2' x 1'
- Juncus patens* - gray rush, 1-2' x 1-2'



GRASSES AND GROUNDCOVER (GC on plan) less than 1-2' and spreading:

- Festuca idahoensis* 'Tomales Bay' - Idaho fescue
- Asarum caudatum* - wild ginger
- Oxalis oregano* - redwood sorrel

See more plant options at
www.green-gardener.org

WATER-WISE GARDEN PLAN FOR AN OAK WOODLAND

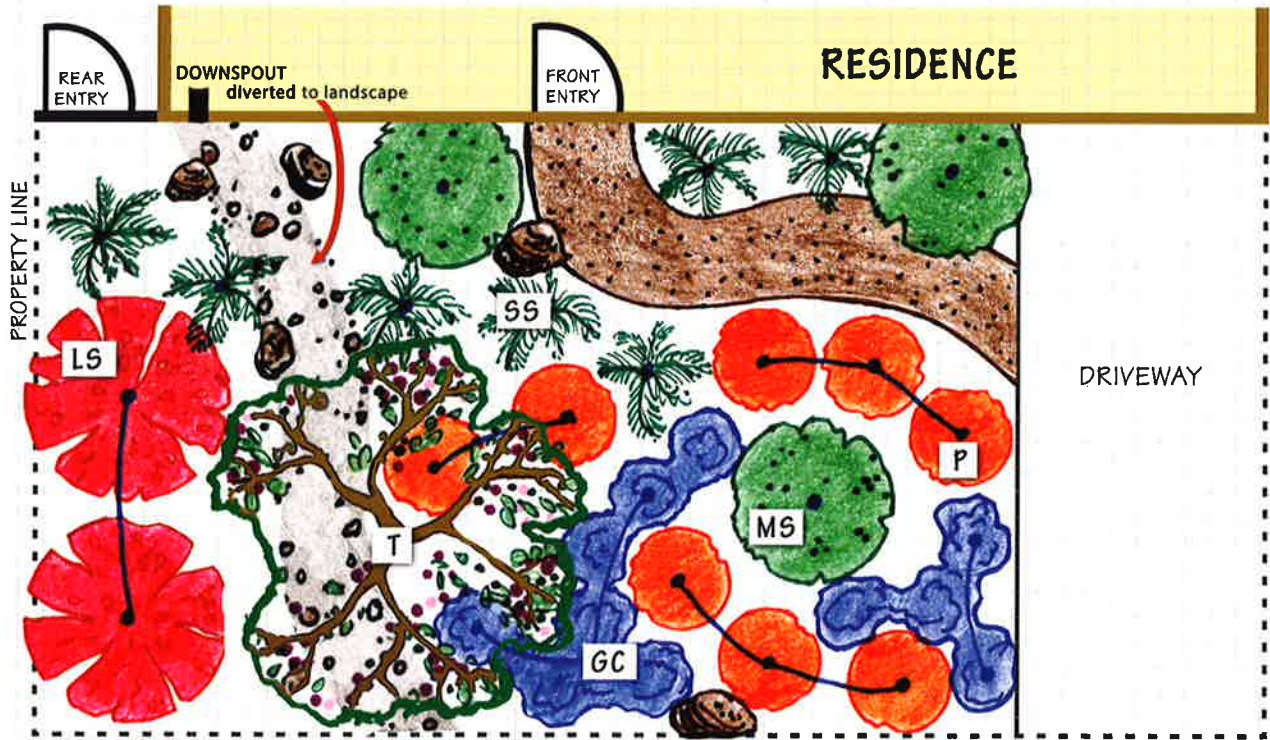


Before your home or neighborhood was built a native plant community existed there. Gardens that incorporate these native plants thrive without fertilizer, pesticides and little to no water because they are naturally adapted to the area and our summer-dry climate. These diverse and beautiful plants also attract and benefit native birds, butterflies and other wildlife.

Is your property in an Oak Woodland?

If your garden is spotted with oak trees with open spaces in between, choose drought tolerant plants from the oak woodland plant community that tolerate sunny days and dry shade.

Sample Landscape Plan SCALE: 1 square = 1 foot



Drawing created by Nicole Douglas, Douglas Landscape Design


Oak Woodland Plant Options - Choose from:

 **TREES OR LARGE SHRUBS (T or LS on plan) more than 10' tall and wide:**

- Heteromeles arbutifolia* – toyon
- Ceanothus spp.* – California lilac
- Rhamnus californica* – coffeeberry

 **MEDIUM SHRUBS (MS on plan) 4-8' tall:**

- Arctostaphylos densiflora* 'Howard McMinn'- vine hill manzanita, 5-7' x 6-10'
- Carpenteria californica* – bush anemone, 6' x 4'
- Grevillea lanigera spp.* – woolly grevillea, 3-6' x 6-10' (NON NATIVE)

 **SMALL SHRUBS (SS on plan) 2-4' tall:**

- Correa pulchella spp.* – Australian fuschia, 2-3' x 4-5' (NOT NATIVE)
- Mimulus aurantiacus* – sticky monkeyflower, 3-4' x 3-4'
- Salvia clevelandii* – Cleveland sage, 3-5' x 3-5'

 **PERENNIALS (P on plan):**

- Iris douglasiana* – Douglas' iris, 1-2' x 2-3'
- Penstemon heterophyllis spp.* – foothill penstemon, 1-2' x 2-3'
- Achillea millefolium* – common yarrow, 1-2' x 2-4'

 **GRASSES AND GROUNDCOVERS (GC on plan) less than 1-2' and spreading:**

- Festuca californica* – California fescue, 2-3' x 2'
- Muhlenbergia rigens* – deer grass, 3-4' x 3'
- Salvia spathacea* – hummingbird sage
- Salvia sonomensis* – creeping sage

See more plant options at
www.green-gardener.org