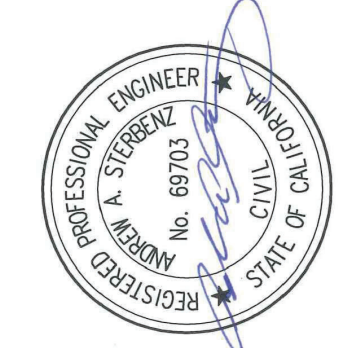


SCOTTS VALLEY WATER DISTRICT GRANITE CREEK ROAD WATERMAIN REPLACEMENT



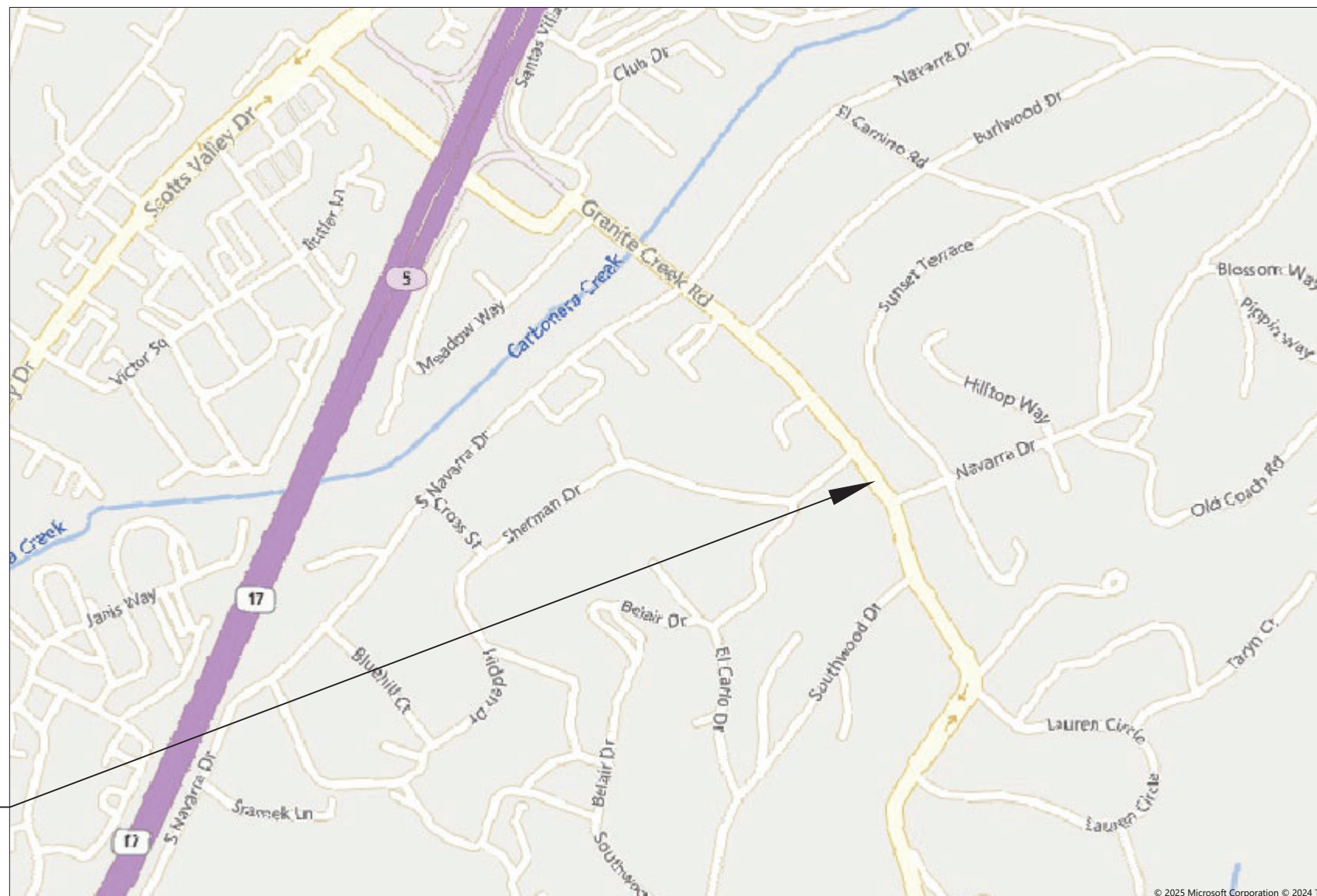
OWNER:
SCOTTS VALLEY WATER DISTRICT (SVWD)
2 CIVIC CENTER DRIVE
SCOTTS VALLEY, CA
831-438-2363

CIVIL ENGINEER:
SCHAAF & WHEELER CONSULTING CIVIL ENGINEERS
3 QUAIL RUN CIRCLE, SUITE 101
SALINAS, CA 93907
831-883-4848

ABBREVIATIONS

- AB AGGREGATE BASE
- AC ASPHALTIC CONCRETE
- APPROX APPROXIMATE
- AVAR AIR VACUUM AIR RELEASE
- BFP BACK FLOW PREVENTER
- BM BENCHMARK
- CL CENTERLINE
- CONC CONCRETE
- CONT CONTINUED
- CPLNG COUPLING
- CY CUBIC YARDS
- CU COPPER
- DI, DIP DUCTILE IRON PIPE
- Ø, DIA DIA DIAMETER
- EB ELECTRIC BOX
- E, ELEC ELECTRIC
- EL, ELEV ELEVATION
- ELL ELBOW
- EV ELECTRIC VAULT
- FG FINISHED GRADE
- FL FLANGE
- FM FORCE MAIN
- FT FEET
- FOC FACE OF CURB
- G GAS
- GALV GALVANIZED
- GRN GROUND
- GV GATE VALVE
- HB HOSE BIB
- HDPE HIGH DENSITY POLYETHYLENE
- HOR HORIZONTAL
- IN INCHES
- INV INVERT ELEVATION
- JT JOINT TRENCH
- LF LINEAR FOOT
- L/S LANDSCAPE
- MIN MINIMUM
- MJ MECHANICAL JOINT
- N NORTH
- N.C. NORMALLY CLOSED
- N.T.S. NOT TO SCALE
- P PUMP
- P.C.C PORTLAND CEMENT CONCRETE
- PE PLAIN END
- PG&E PACIFIC GAS AND ELECTRIC
- PL PROPERTY LINE
- PRV PRESSURE REDUCING VALVE
- PVC POLYVINYL CHLORIDE
- REF REFERENCE
- RIM RIM ELEVATION
- ROW, RW RIGHT OF WAY
- S SLOPE
- SD STORM DRAIN
- STL STEEL
- STA STATION
- THD THREADED
- TOC TOP OF CURB
- TYP TYPICAL
- UB UTILITY BOX
- VERT VERTICAL
- W WATER
- WM WATER METER
- W/ WITH
- WB WATER BOX

PROJECT SITE



VICINITY MAP

LEGEND

DESCRIPTION	EXISTING	PROPOSED
BENCHMARK / SOIL BORING	+	+
BOLLARD	○	○
MANHOLE	○	●
VALVE	⊕	⊕
CATCH BASIN / DRAIN INLET / AREA DRAIN	⊕	⊕
WATER METER	⊕	⊕
SIGN	+	+
UTILITY BOX (SIZE VARIES)	□	□
BUILDING LINE	—	—
CONCRETE	—	—
THRUST BLOCK	△	△
FENCE	—	—
CENTERLINE	—	—
EDGE OF PAVEMENT	—	—
SANITARY SEWER	—	—
STORM DRAIN	—	—
WATER	—	—
UNDERGROUND GAS	—	—
JOINT TRENCH	—	—
FORCEMAIN	—	—
TELEPHONE	—	—
ELECTRICAL	—	—
OVER HEAD ELECTRICAL	—	—
ABANDONED PIPE	—	—
DEMOLITION	—	—
TEMPORARY WATER HIGHLINE	—	—



PROJECT SITE

SUBMITTED: _____ DATE: 01/30/2025
 ANDREW A. STERBENZ, PE
 SCHAAF & WHEELER

APPROVED: _____ DATE: _____
 NATE GILLESPIE, OPERATIONS MANAGER
 SCOTTS VALLEY WATER DISTRICT

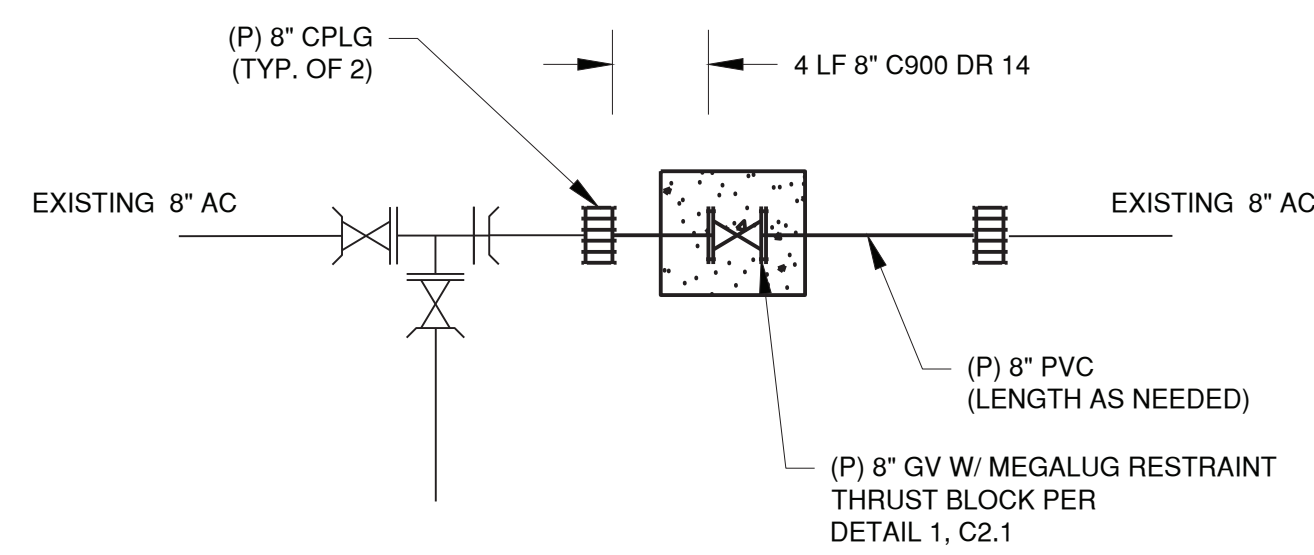
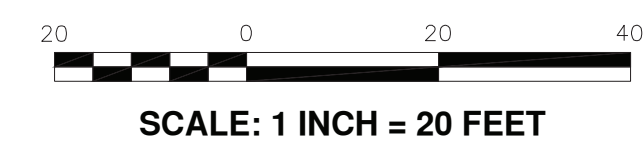
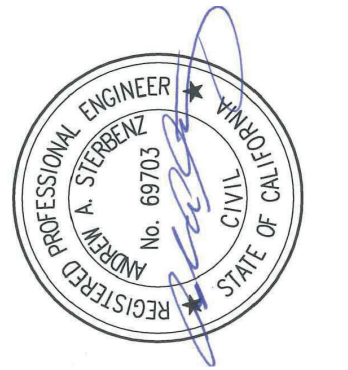


REVISIONS	DATE	APPR
NC	▲	▲
	▲	▲
	▲	▲
	▲	▲

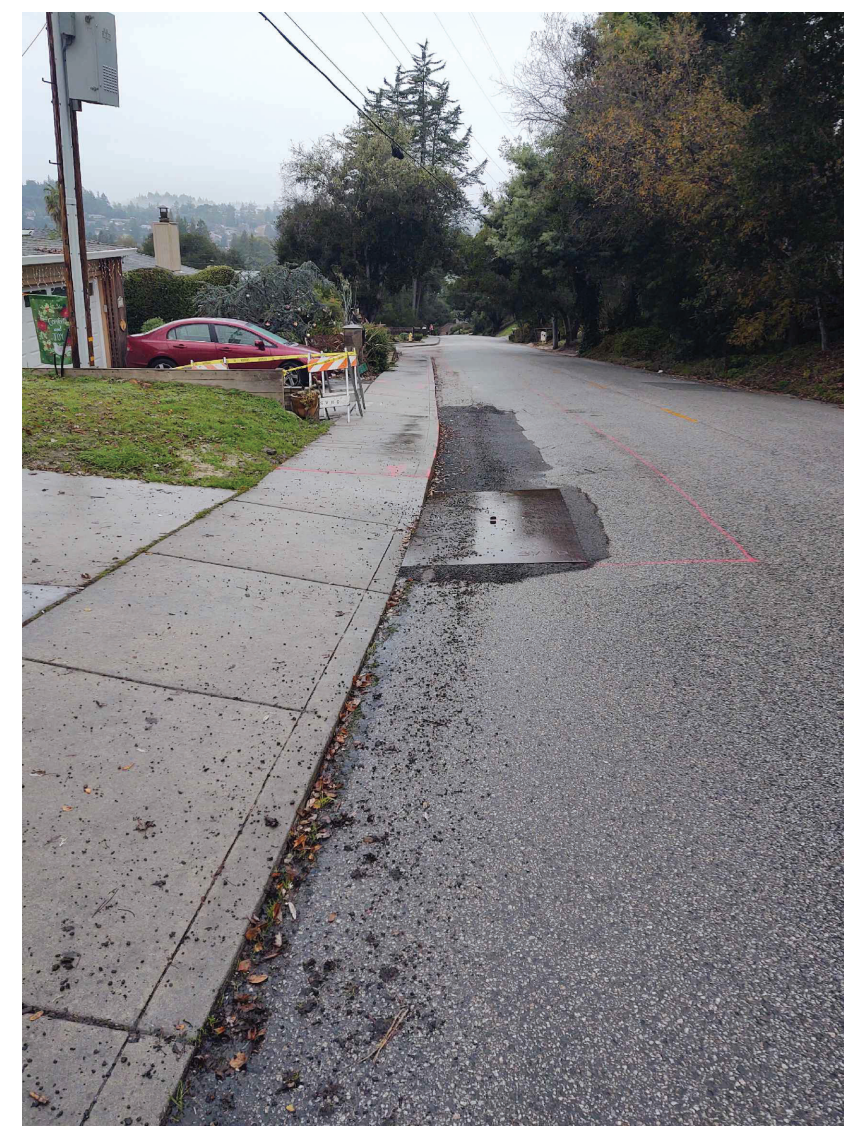
Schaaf & Wheeler
CONSULTING CIVIL ENGINEERS
3 QUAIL RUN CIRCLE, SUITE #101
SALINAS, CA 93907
(831) 883-4848

SCOTTS VALLEY WATER DISTRICT
GRANITE CREEK ROAD WATERMAIN REPLACEMENT
COVER SHEET, VICINITY MAP, ABBREVIATIONS & LEGEND

DATE: 1/30/2025	SCALE: AS SHOWN	DESIGN: JCT	DRAWN: JCT	CHECKED: AAS
SHEET				
1 OF 5				



CUT-IN VALVE DETAIL 1
NO SCALE



GCR LOOKING NORTHWEST



GCR LOOKING SOUTHEAST

SIDEWALK REPAIR LIMITS

NOTE: FINAL LIMITS FOR SIDEWALK AND PAVEMENT RESTORATION TO BE DETERMINED AFTER LINE AND GRADE SURVEY FOR CURB, GUTTER AND SIDEWALK HAS BEEN REVIEWED

UNDERGROUND SERVICE ALERT
CALL: TOLL FREE
1-800-227-2600
TWO WORKING DAYS BEFORE YOU DIG

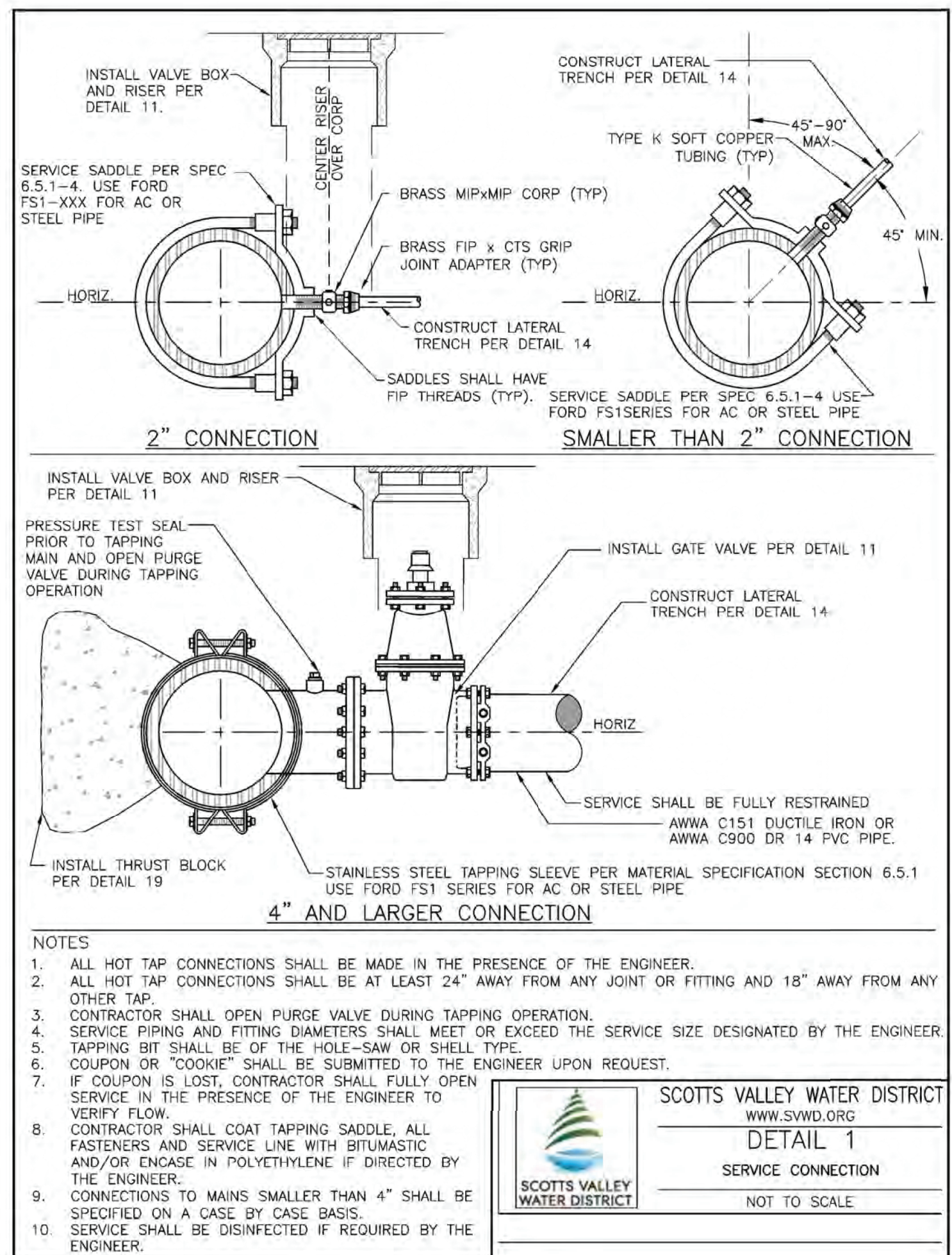
SCOTT'S VALLEY WATER DISTRICT
GRANITE CREEK ROAD WATERMAIN REPLACEMENT
PLAN VIEW & DETAILS

Schaaf & Wheeler
CONSULTING CIVIL ENGINEERS
3 QUAIL RUN CIRCLE, SUITE #101
SALINAS, CA 95907
(831) 983-4848

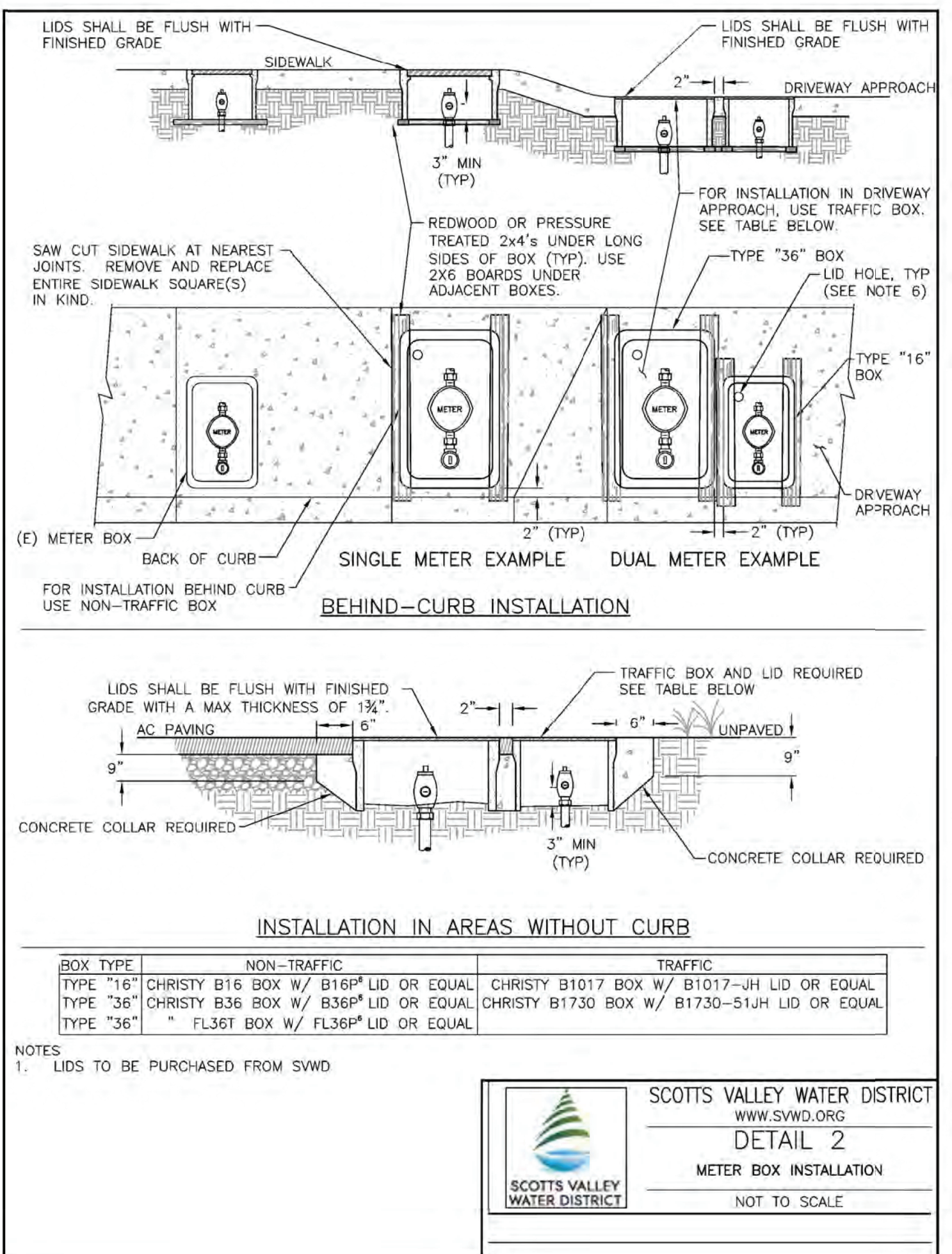
NO.	REVISIONS	DATE	APPR.
1			
2			
3			
4			

DATE: 1/30/2025	SCALE: AS SHOWN	DESIGN: JCT	DRAWN: JCT	CHECKED: AAS
SHEET				
3			OF 5	

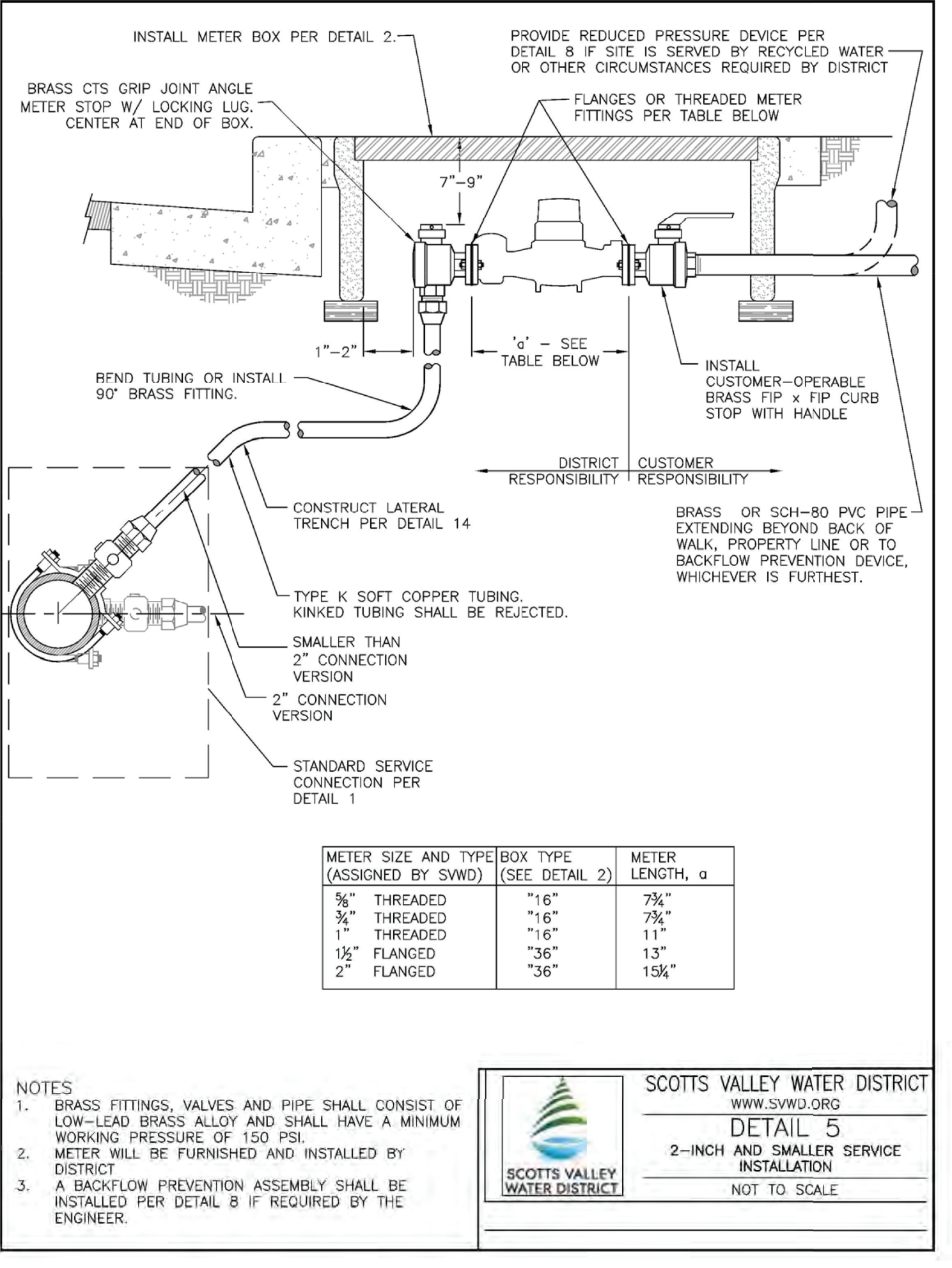
C:\USERS\JTABUE\DESKTOP\WORK\DRAWINGS\C1.0 GCR PIPE REPAIR.DWG by JTABUE 1/30/2025 3:54 PM



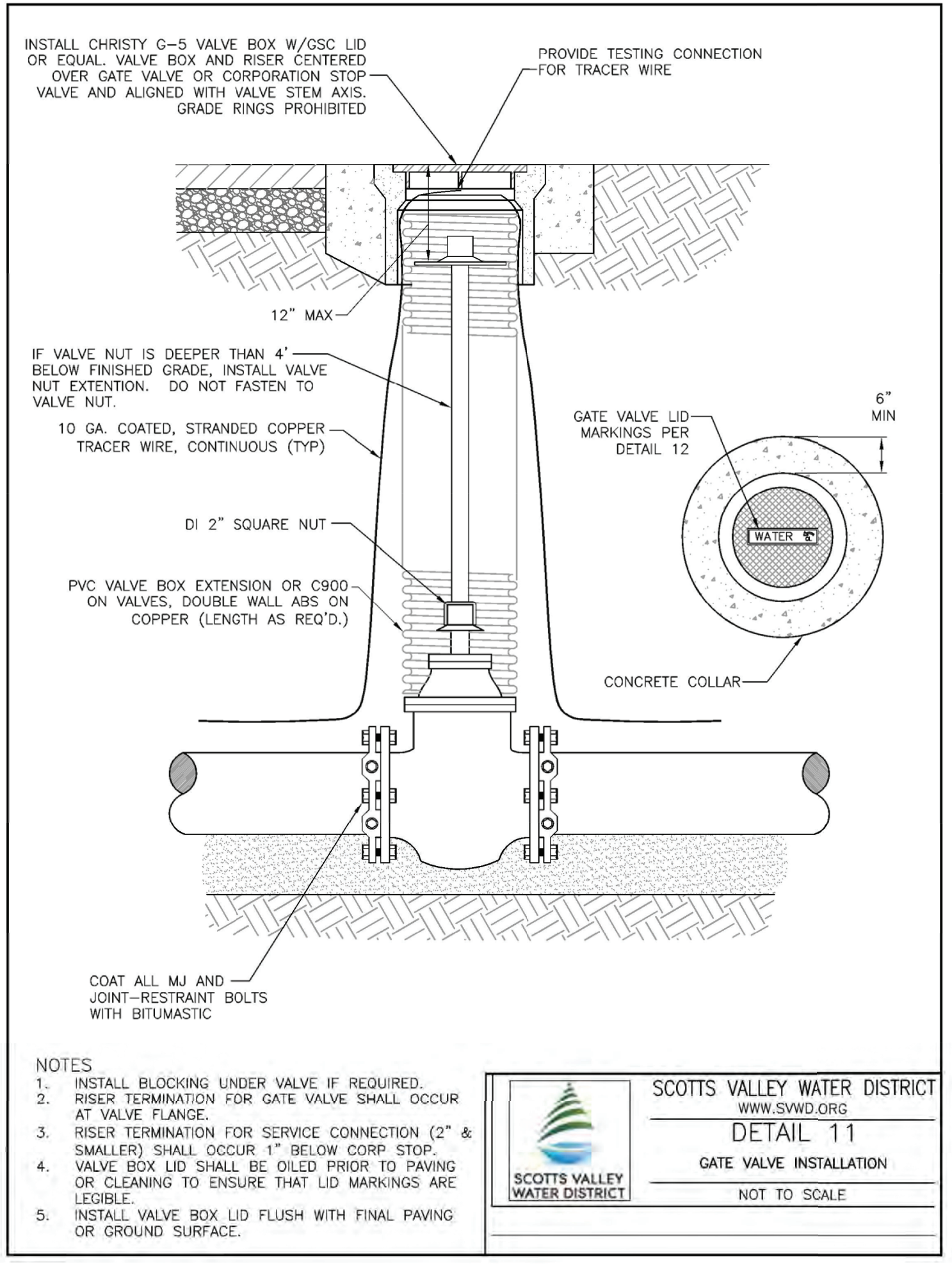
SCOTT'S VALLEY WATER DISTRICT
 WWW.SVWD.ORG
DETAIL 1
 SERVICE CONNECTION
 NOT TO SCALE



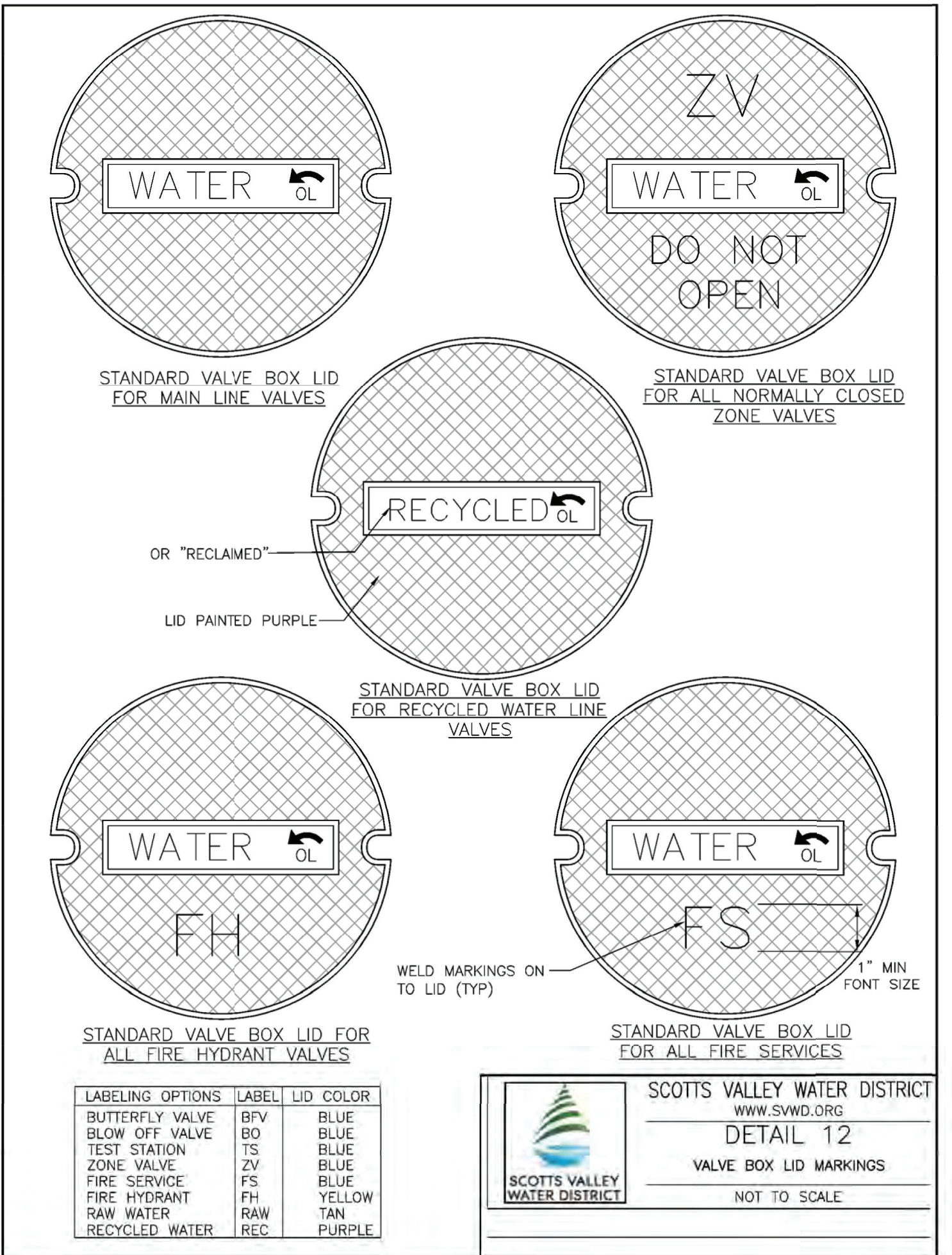
SCOTT'S VALLEY WATER DISTRICT
 WWW.SVWD.ORG
DETAIL 2
 METER BOX INSTALLATION
 NOT TO SCALE



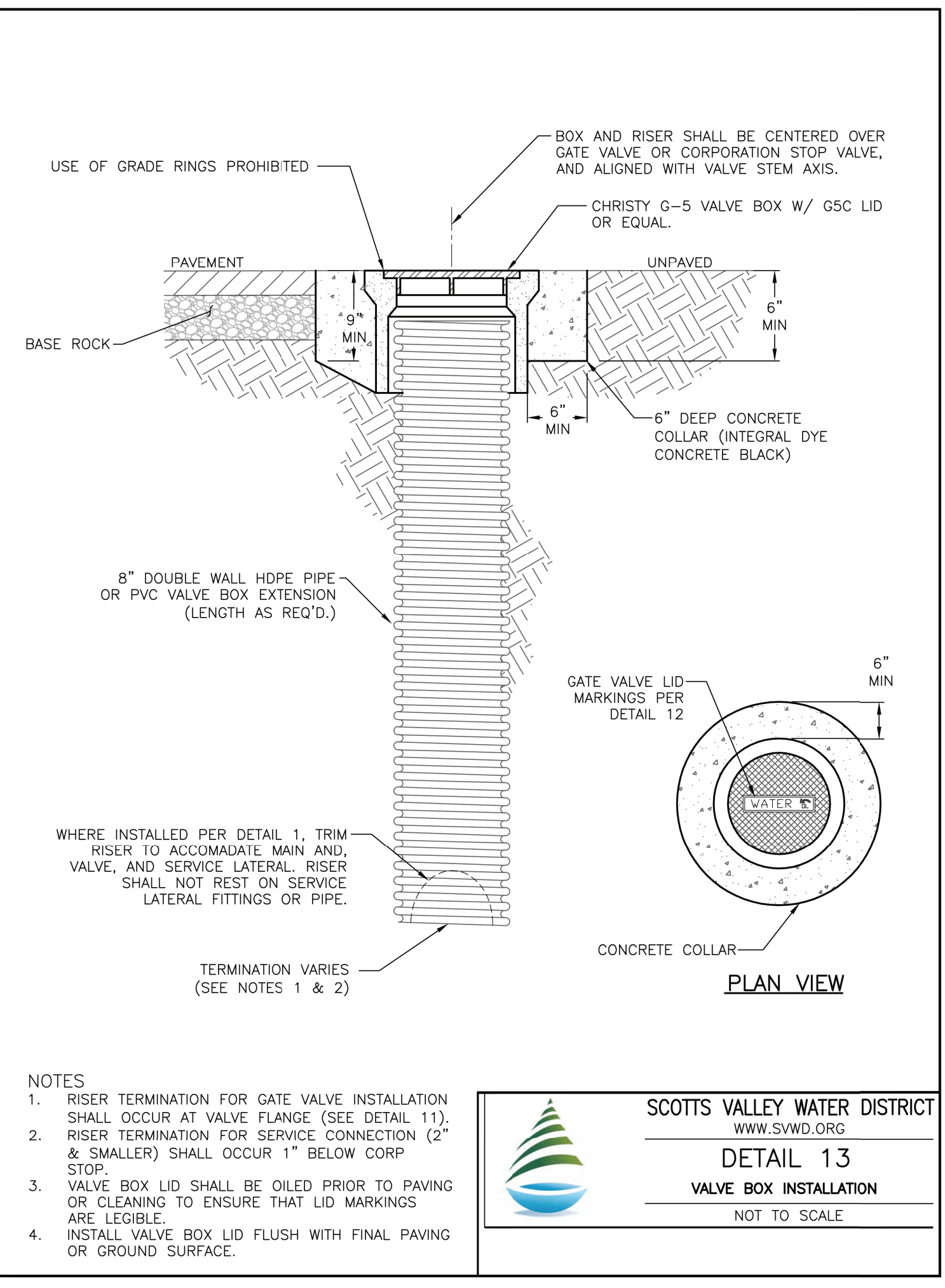
SCOTT'S VALLEY WATER DISTRICT
 WWW.SVWD.ORG
DETAIL 5
 2-INCH AND SMALLER SERVICE INSTALLATION
 NOT TO SCALE



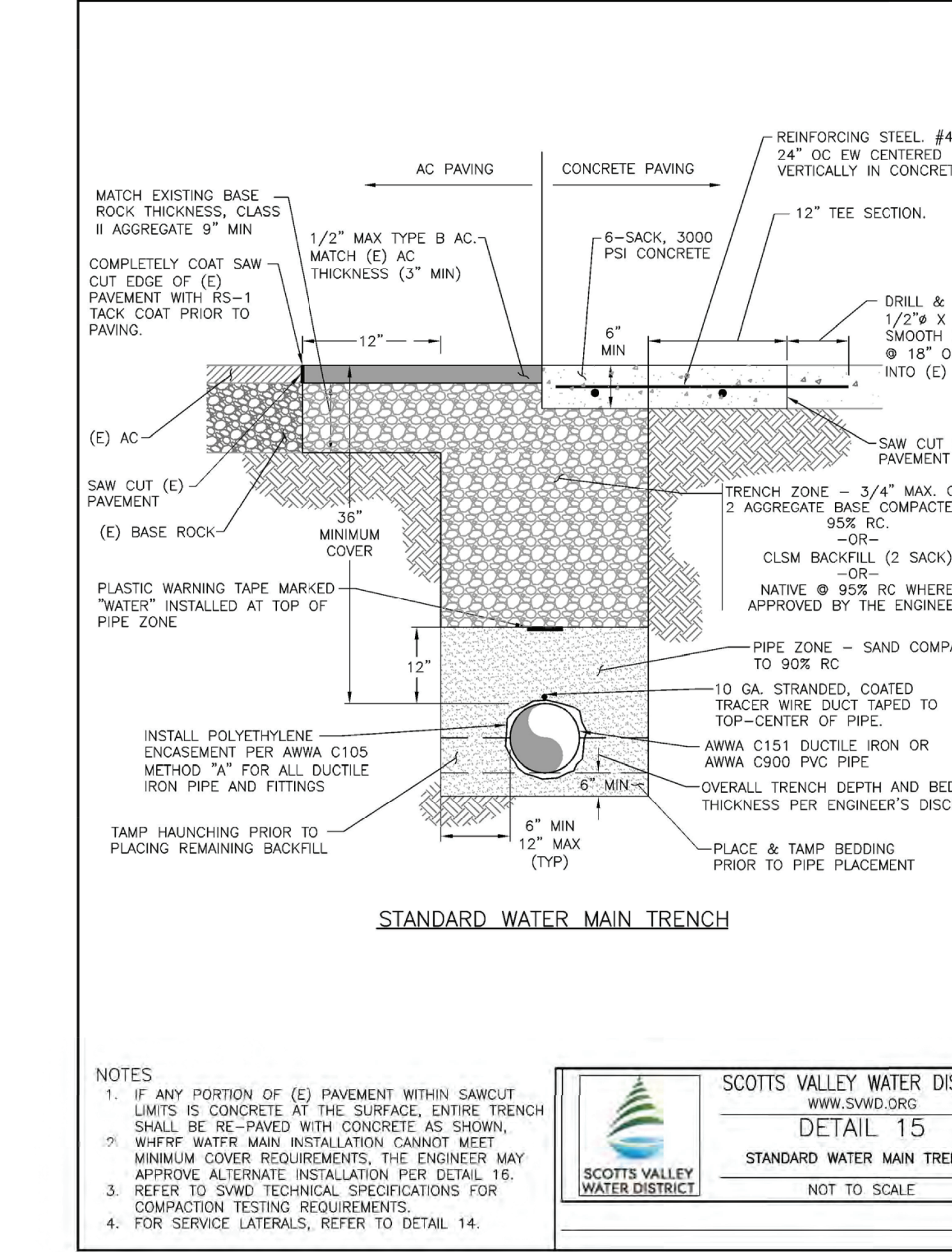
SCOTT'S VALLEY WATER DISTRICT
 WWW.SVWD.ORG
DETAIL 11
 GATE VALVE INSTALLATION
 NOT TO SCALE



SCOTT'S VALLEY WATER DISTRICT
 WWW.SVWD.ORG
DETAIL 12
 VALVE BOX LID MARKINGS
 NOT TO SCALE



SCOTT'S VALLEY WATER DISTRICT
 WWW.SVWD.ORG
DETAIL 13
 VALVE BOX INSTALLATION
 NOT TO SCALE



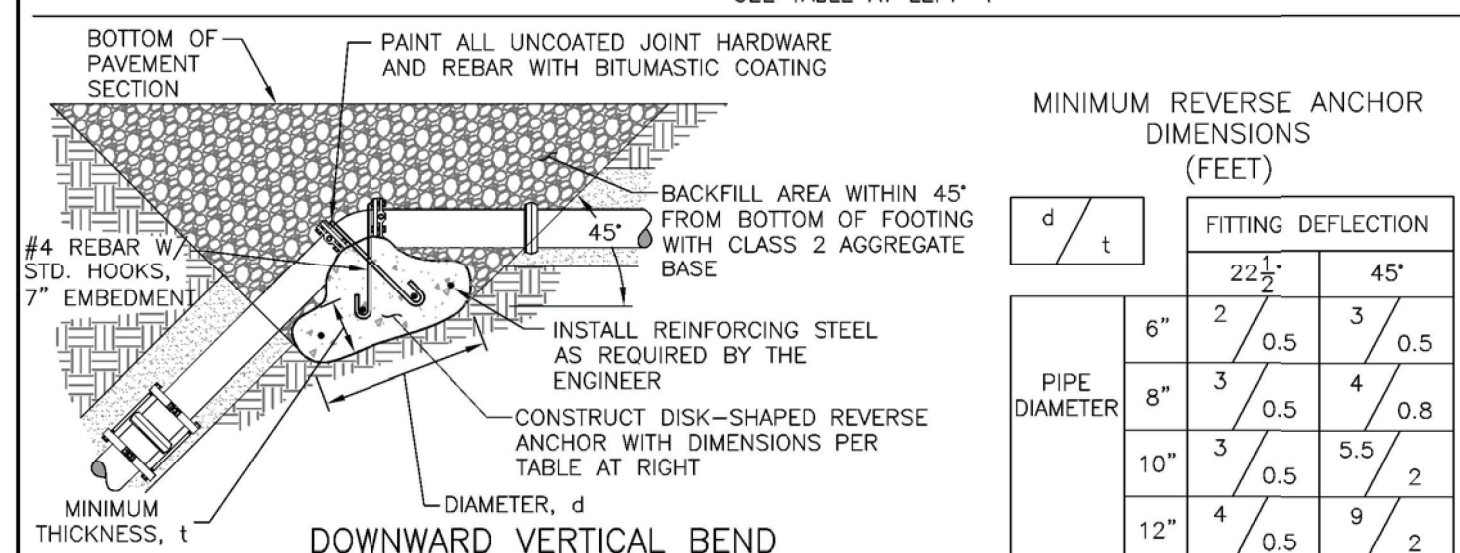
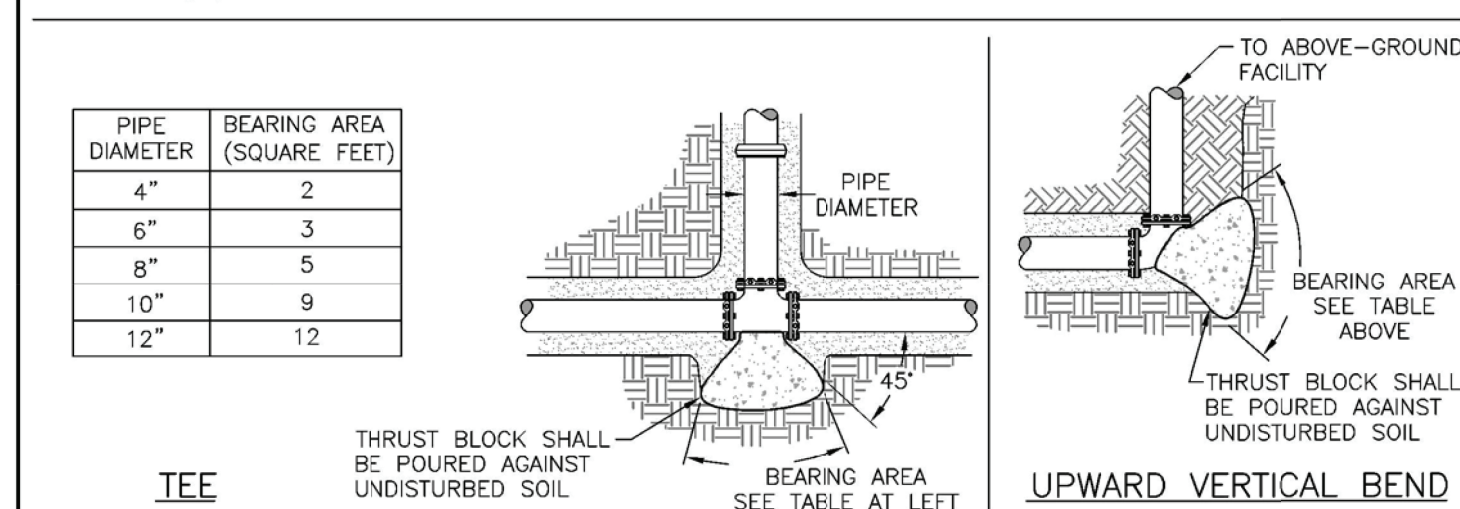
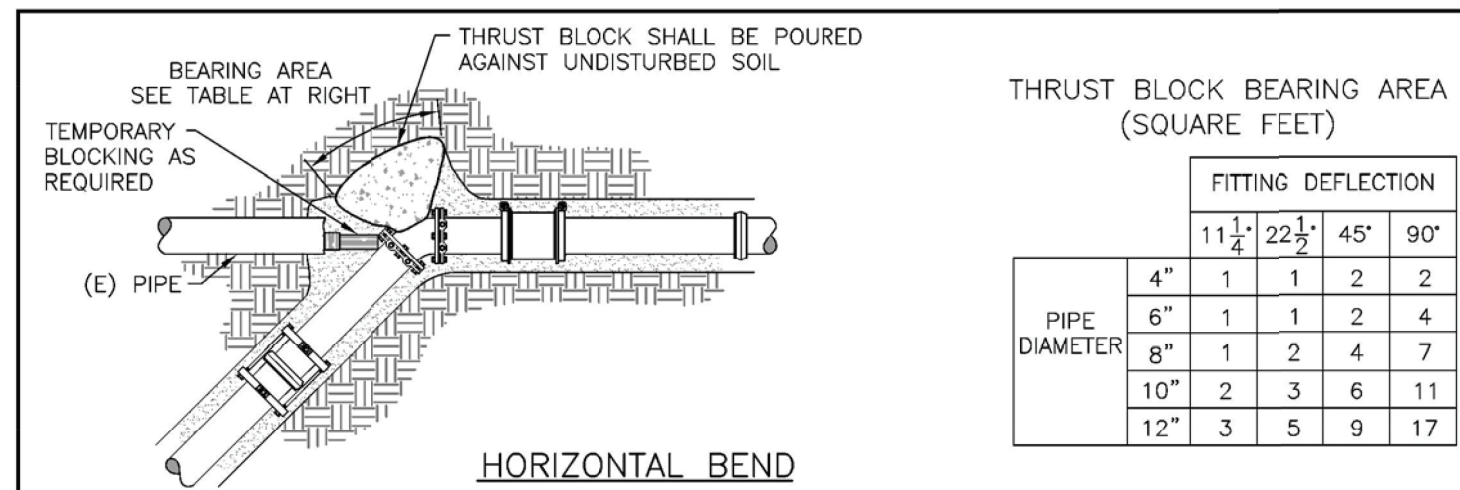
SCOTT'S VALLEY WATER DISTRICT
 WWW.SVWD.ORG
DETAIL 15
 STANDARD WATER MAIN TRENCH
 NOT TO SCALE

NO.	REVISIONS	DATE	APPR.

SCOTT'S VALLEY WATER DISTRICT
 WWW.SVWD.ORG
DETAIL 11
 GATE VALVE INSTALLATION
 NOT TO SCALE

SCOTT'S VALLEY WATER DISTRICT
 WWW.SVWD.ORG
DETAIL 15
 STANDARD WATER MAIN TRENCH
 NOT TO SCALE

C:\USERS\JTABUE\DESKTOP\WORK\SVWD\05_GRANITE_CREEK\DRAWINGS\C2.0 DETAILS.DWG by JTABUE 1/30/2025 3:54 PM



NOTES

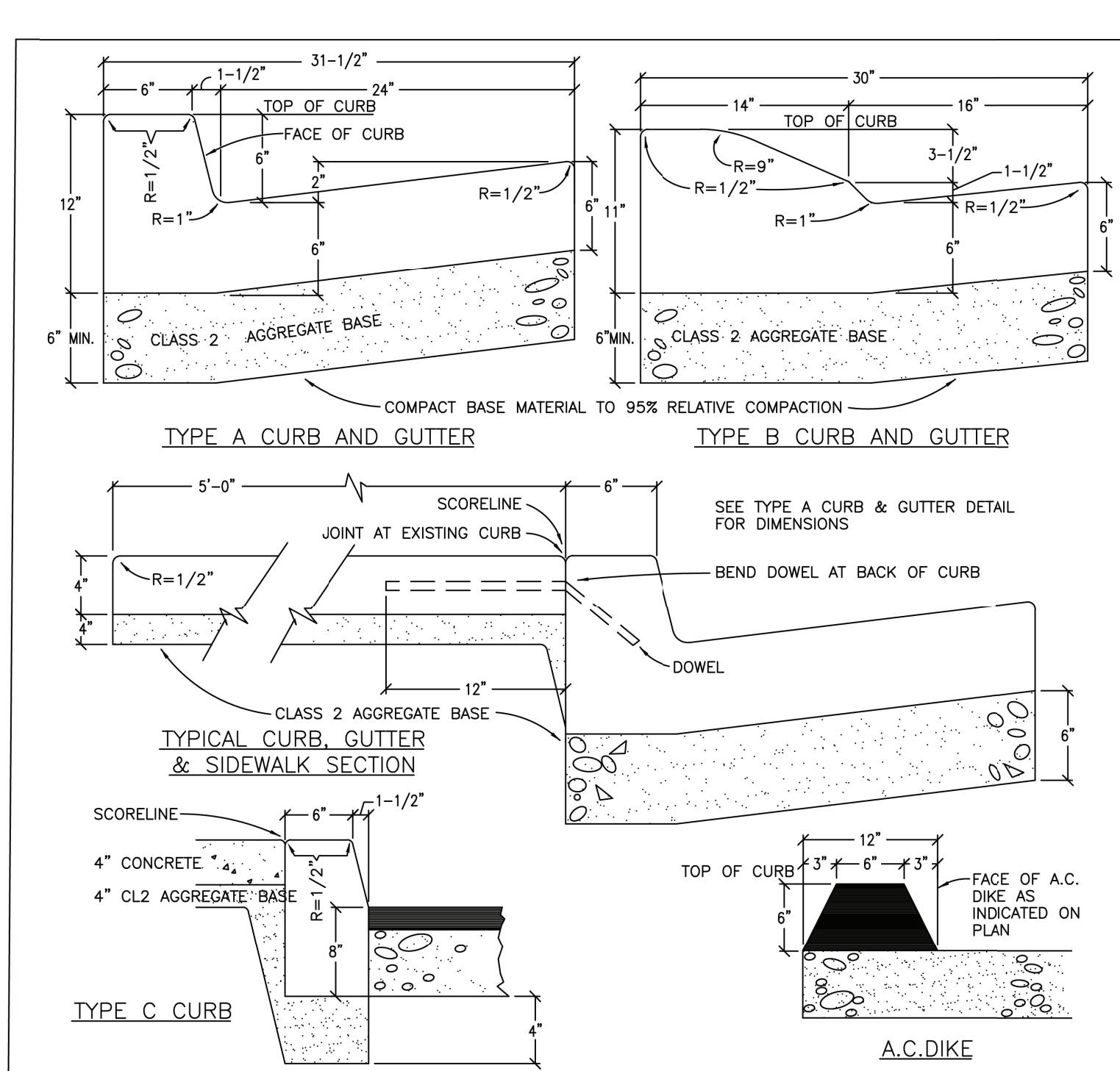
- CONCRETE THRUST BLOCKS SHALL BE INSTALLED WHEN INDICATED BY THE CONTRACT DOCUMENTS OR AT THE DISCRETION OF THE ENGINEER.
- THRUST BLOCKING IS REQUIRED WHERE IT IS UNKNOWN IF PIPE IS RESTRAINED, SUCH AS AT A CONNECTION TO EXISTING PIPE.
- ALL CONCRETE SHALL BE 3000 PSI MINIMUM 28 DAYS COMPRESSIVE STRENGTH.
- FOR PIPELINES LARGER THAN 10" IN DIAMETER, PIPELINES INSTALLED AT DEPTHS LESS THAN 36 INCHES, OR IN POOR SOILS, THRUST BLOCK DESIGN SHALL BE APPROVED BY THE ENGINEER ON A CASE BY CASE BASIS.

SCOTT'S VALLEY WATER DISTRICT
 WWW.SVWD.ORG
DETAIL 19
 THRUST BLOCK INSTALLATION
 NOT TO SCALE



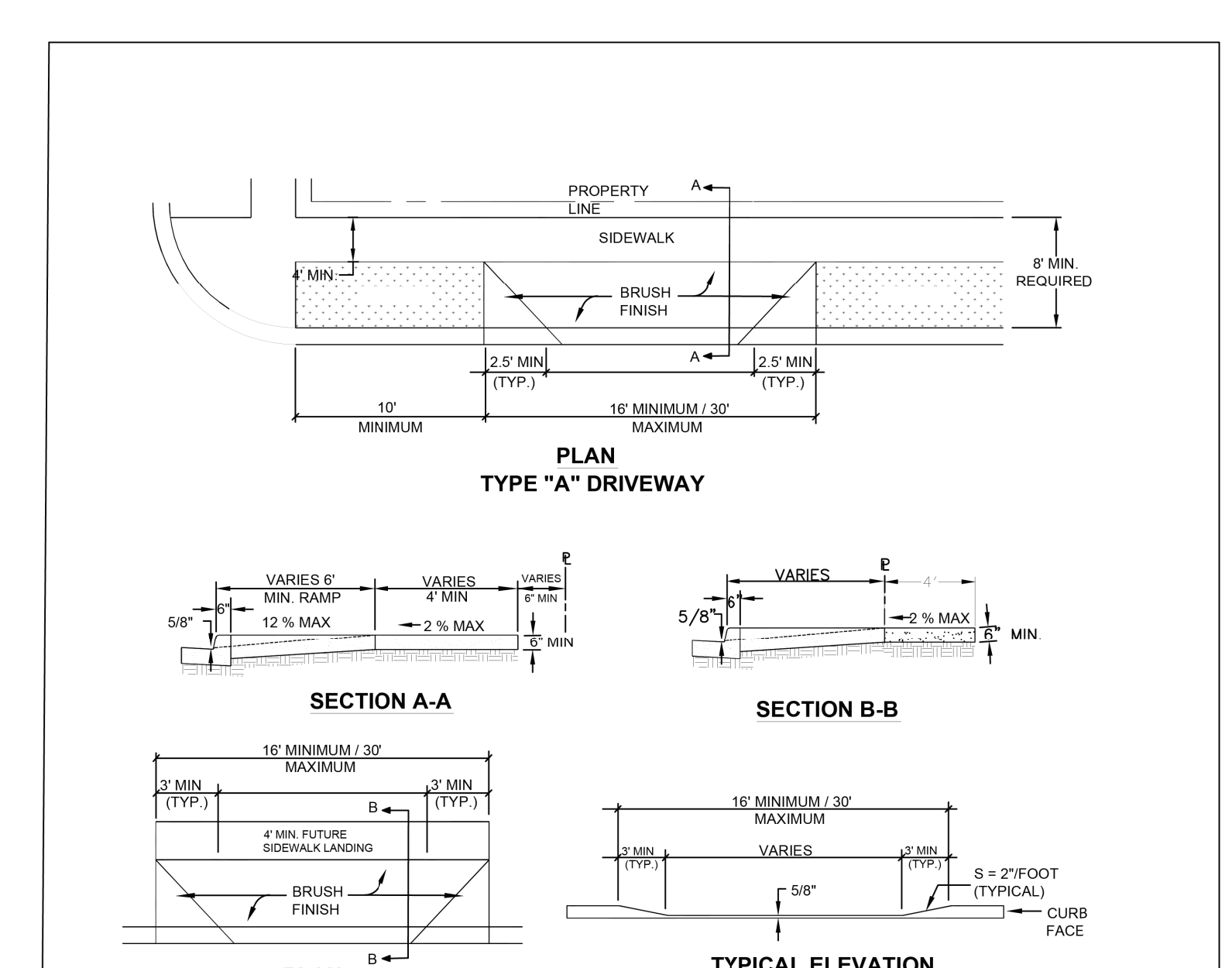
- PAVEMENT SHALL BE REPLACED IN KIND, HOWEVER, MINIMUM STANDARDS ARE AS FOLLOWS:
 A. PAVED ROADS- 3" AC TYPE B OVER 9" PRIME COATED AB CLASS 2
 B. NON-PAVED ROADS- SINGLE SEAL COAT OVER 6" AB CLASS 2 IN TRENCH AREA, THEN SINGLE SEAL COAT ENTIRE ROAD SECTION.
- CUT EXISTING PAVEMENT TO PRODUCE A STRAIGHT VERTICAL FACE AGAINST WHICH TO BUTT THE TRENCH PAVEMENT OR DEEP LIFT AC PLUG TO SAME DEPTH AS AC AND COMPACTED BASE.
- LONGITUDINAL TRENCHES WITHIN A PAVED AREA OR ROAD RIGHT-OF-WAY SHALL BE BACKFILLED AS SHOWN ABOVE.
- TRENCHES OUTSIDE A PAVED AREA OR ROAD RIGHT-OF-WAY SHALL HAVE BACKFILL COMPACTED TO NOT LESS THAN 90% RELATIVE COMPACTION.
- AN INSPECTOR, APPROVED BY THE DIRECTOR OF PUBLIC WORKS, SHALL BE ON SITE DURING ALL COMPACTION WORK TO OBSERVE UNIFORM COMPACTION METHODS AND MATERIALS.
- IF THE EDGE OF THE ASPHALT CAP IS WITHIN 2' OF THE EXISTING EDGE OF PAVEMENT OR LIP OF GUTTER, THE REMAINING PAVEMENT SHALL BE REMOVED AND THE TRENCH PAVING SHALL BE EXTENDED TO THE EDGE OF THE PAVEMENT LIP OF GUTTER.

CITY OF SCOTT'S VALLEY STANDARD DETAIL
LONGITUDINAL TRENCH BACKFILL
 SCOTT HAMBY
 DIRECTOR OF PUBLIC WORKS
 DRAWING NO: SS-03, SD-05
 SCALE: NONE
 DATE: 12/06/17



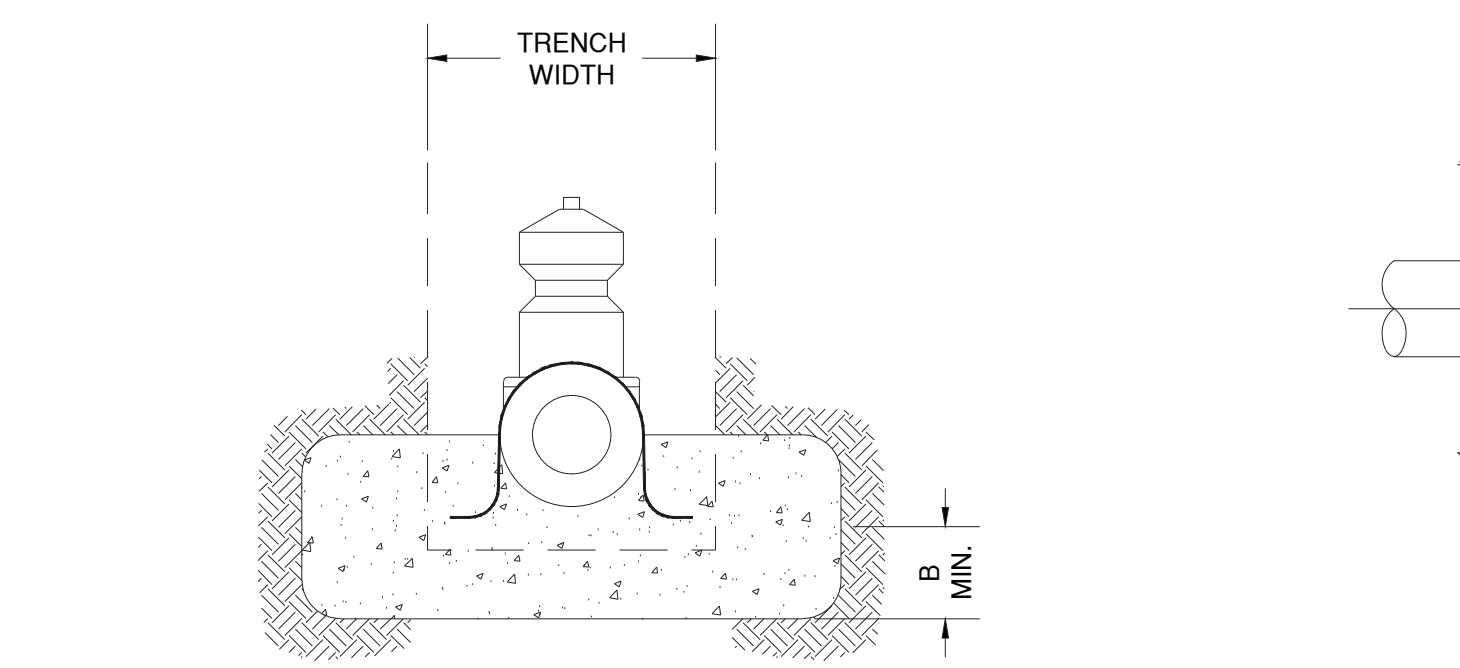
- TYPE A, B & C CURB, GUTTER & SIDEWALK ARE TO BE CONSTRUCTED OF CLASS A CONCRETE
- WEAKENED PLANE JOINTS SHALL BE CONSTRUCTED AT 12' INTERVALS, AND AT THE ENDS OF RETURNS. EXPANSION JOINTS SHALL BE AT MAXIMUM 60 FEET SPACING.
- TYPE B CURB TO BE USED ONLY TO CONFORM TO EXISTING TYPE B CURB OR FOR REPLACEMENT IN KIND. TYPE B CURB MAY NOT BE USED IN NEW CONSTRUCTION.
- IF SIDEWALK IS NOT INSTALLED MONOLITHICALLY WITH CURB & GUTTER, PLACE #4 DOWELS 18" LONG AT 4' O.C. IN BACK OF CURB 3" DOWN FROM TOP OF CURB, 6" IN CONCRETE.

CITY OF SCOTT'S VALLEY STANDARD DETAIL
CURB, GUTTER, SIDEWALK AND A.C. DIKE
 SCOTT HAMBY
 DIRECTOR OF PUBLIC WORKS
 DRAWING NO: ST-04
 SCALE: NONE
 DATE: 12/06/17



- SIDEWALK AREA ADJACENT TO DRIVEWAY APPROACH SHALL HAVE A < 2% CROSS SLOPE
- ALL CONCRETE TO BE CLASS "B" CONCRETE

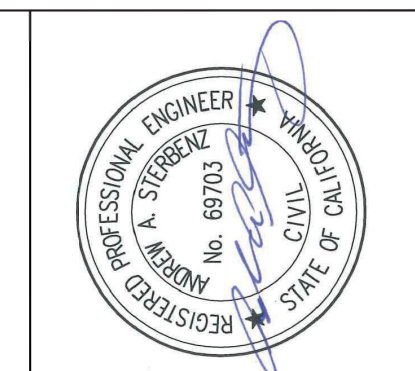
CITY OF SCOTT'S VALLEY STANDARD DETAIL
DRIVEWAY APPROACH
 SCOTT HAMBY
 DIRECTOR OF PUBLIC WORKS
 DRAWING NO: ST-06
 SCALE: NONE
 DATE: 12/06/17



SIZE (IN)	A (IN)	B (IN)
4	6	4
6	6	8
8	6	12
10	12	18
12	12	18

- NOTES:**
- POUR CLASS A2 CONCRETE (600-C-2500) THRUST BLOCK AGAINST UNDISTURBED SOIL
 - COAT STEEL STIRRUPS NOT EMBEDDED IN CONCRETE WITH 1/8" MIN. THICKNESS OF NO-OX-ID
 - STEEL STIRRUPS SHALL BE GRADE 60

GATE VALVE THRUST BLOCK DETAIL 1
 NO SCALE C2.0



DATE	APPR

Schaaf & Wheeler
 CONSULTING CIVIL ENGINEERS
 3 QUAIL RUN CIRCLE, SUITE #101
 SALINAS, CA 95907
 (831) 883-4848

SCOTT'S VALLEY WATER DISTRICT
GRANITE CREEK ROAD WATERMAIN REPLACEMENT
DETAILS II